

CLINICAL TEACHING CHEAT SHEET

Q1: HOW MANY TIMES WILL I BE EVALUATED THIS SEMESTER?

You will be evaluated 7xs this semester!

1. Co-evaluation (mentor teacher & supervisor evaluate the same lesson)
2. **3** Mentor Teacher Formal Evaluations
3. **3** Supervisor Formal Evaluations
4. The Formative Evaluation Form will be used for all 7 evaluations

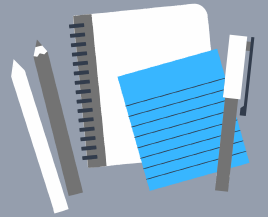


Q2: HOW MANY LESSON PLANS WILL I WRITE THIS SEMESTER?

- You will write a lesson plan for each evaluated lesson (**7**).
- Beginning Weeks **4-5**, you will plan a minimum of **1** lesson/school day.
- Beginning Weeks **6-8**, you will plan a minimum of **2** lessons/school day.
- Beginning Weeks **9-14**, you will plan all lessons each school day.
- The long lesson plan format will be used for all lesson plans until the mentor teacher and university supervisor determine that the short lesson plan format may be used.
- All non-evaluated lesson plans should be completed and uploaded to the assessment system according to the schedule above.
- The lesson plan should be submitted to your mentor teacher and supervisor **2** teaching days prior to teaching.

Q3: WHAT IS THE DIFFERENCE BETWEEN THE EDTPA LESSON PLAN AND THE CLINICAL LESSON PLAN?

- There is no difference between the edTPA and clinical lesson plans. The long lesson plan format should be used for both lesson plans.



Q4: WHAT DAYS SHOULD I ATTEND MY PLACEMENT?

- You should attend your placement daily M-F.
- You should follow your mentor teacher's schedule this semester. This includes during school hours and any extracurricular activities, professional development, workshops, etc. that your mentor teacher attends.
- You will follow the school district calendar during this semester for holidays and breaks, not the UofM schedule.

Q5: WHAT OTHER ASSIGNMENTS DO I COMPLETE FOR RESIDENCY?

- You must complete a lesson reflection on each evaluated lesson (**7**) that is submitted to your supervisor in the assessment system by the next morning after each evaluation.
- By or during Week 15, you must observe **4** different classrooms in the school where you are placed and complete the observation question form that will be submitted to your supervisor in the assessment system.
- You will create a clinical teaching file in the assessment system for your university supervisor to assess.
- Your mentor teacher will assess your teacher dispositions using the EDA form. This form will be completed in the assessment system by Friday, October 29th.
- Your mentor teacher and university supervisor will complete the summative assessment on you at the end of the semester. This form will be completed in the assessment system by Friday, November 19th.

- Once the assessment system is live in October, all assignments will be uploaded there for your university supervisor to check.
- All evaluations of candidates will be completed in the assessment system except the co-evaluation because it will be completed before October.
- The time log will be kept on the time log form until the assessment system is live. Once the system is live, all time will be logged in the assessment system.
- Copies of all forms can be accessed at this link: <https://www.memphis.edu/tep/forms/index.php>. Please scroll to Clinical Teaching forms. You will find PDF and Word versions of all forms that will be used this semester.



**IF YOU HAVE ANY QUESTIONS,
PLEASE CONTACT DR. NICHELLE
ROBINSON AT
NCRBNSON@MEMPHIS.EDU
OR
AYANNA PERKINS AT
PRKINS10@MEMPHIS.EDU**

