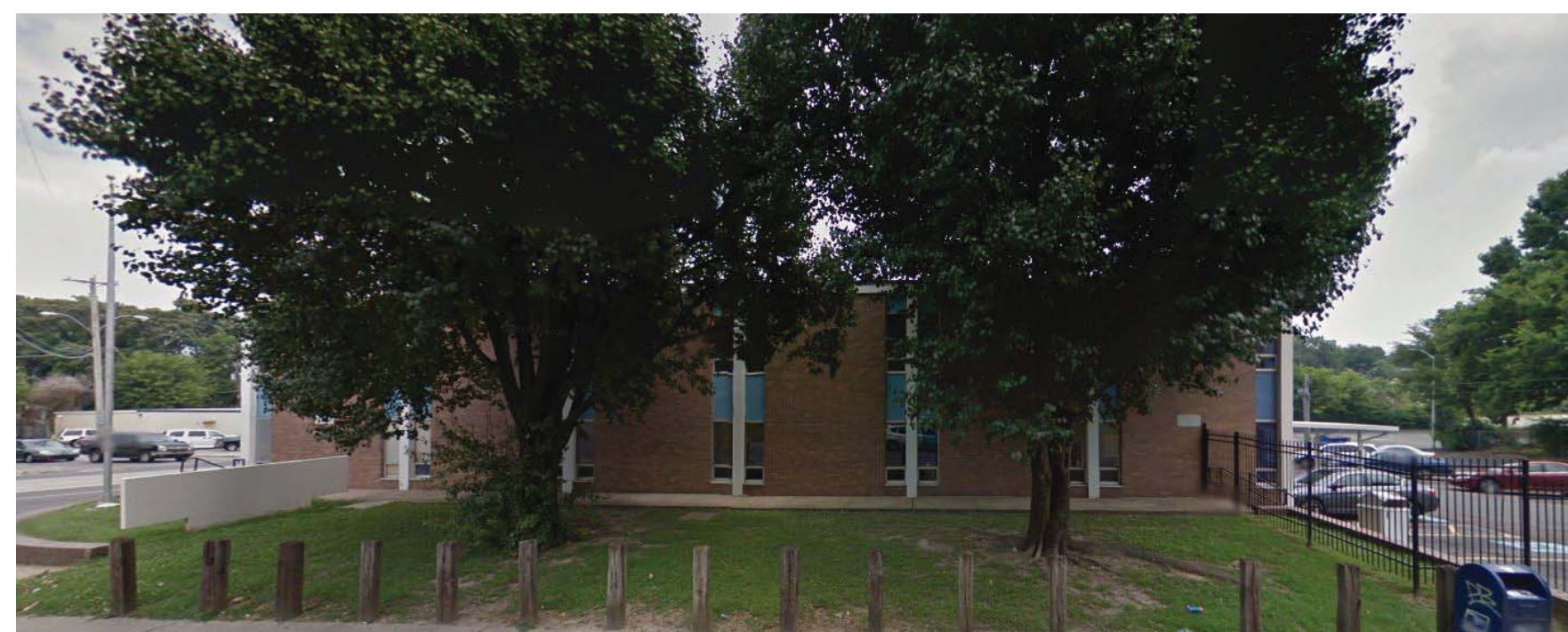
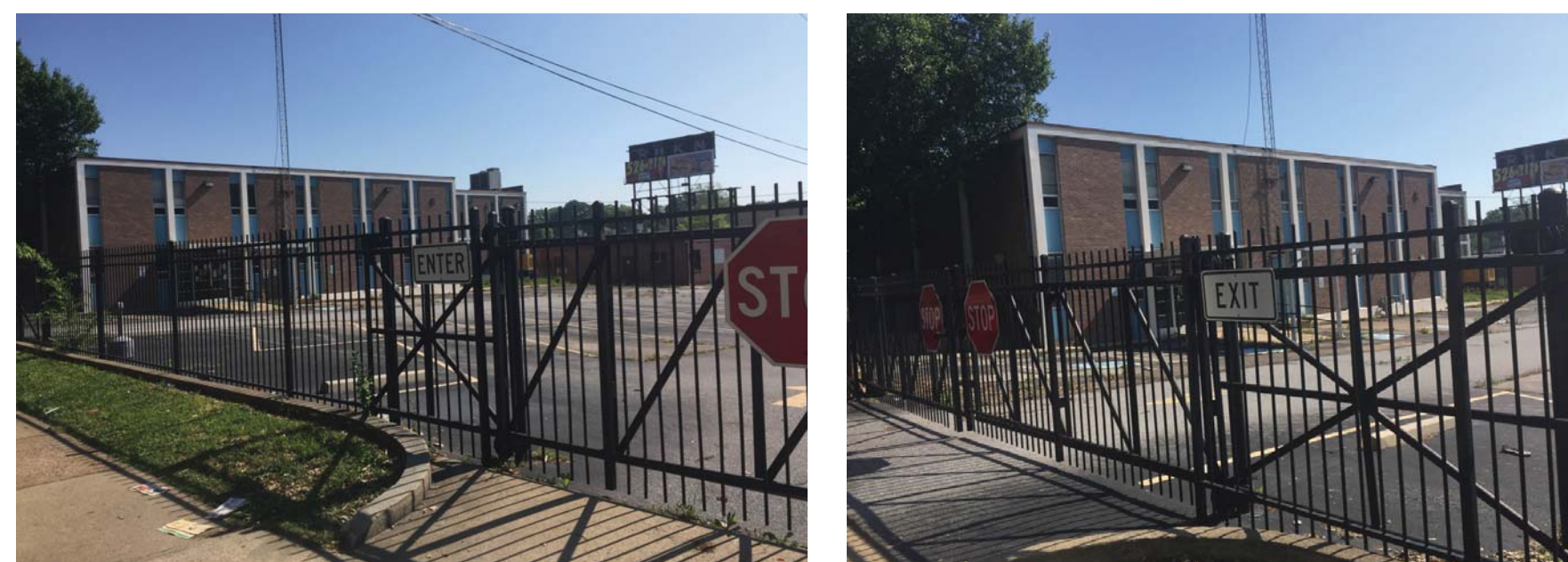


# S.T.E.A.M. HUB

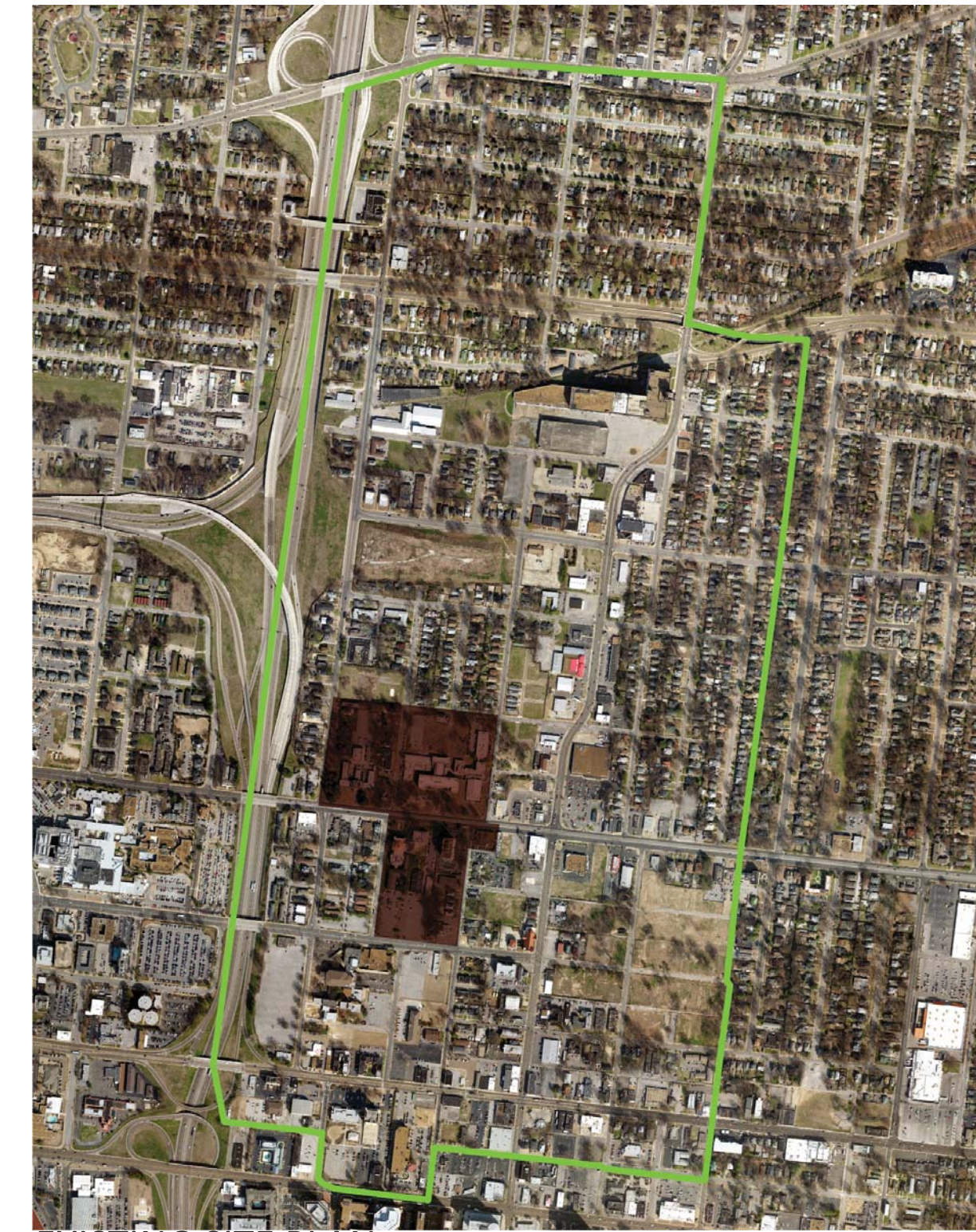
In the Crosstown Neighborhood, it is currently lacking education for all grade levels, and by adding a daycare, elementary school, and a youth art center, the goal is to create an educational niche that will encourage students of all ages to continue to grow their knowledge. The primary focus is the Youth Art Center that provides the art curriculum that is no longer implemented in the Shelby County Schools. The Youth Art Center not only provides art programs for students, but residents in the Crosstown Neighborhood and surrounding area can sign up in adult art-focused programs as well.



SITE PLAN  
SCALE: NTS



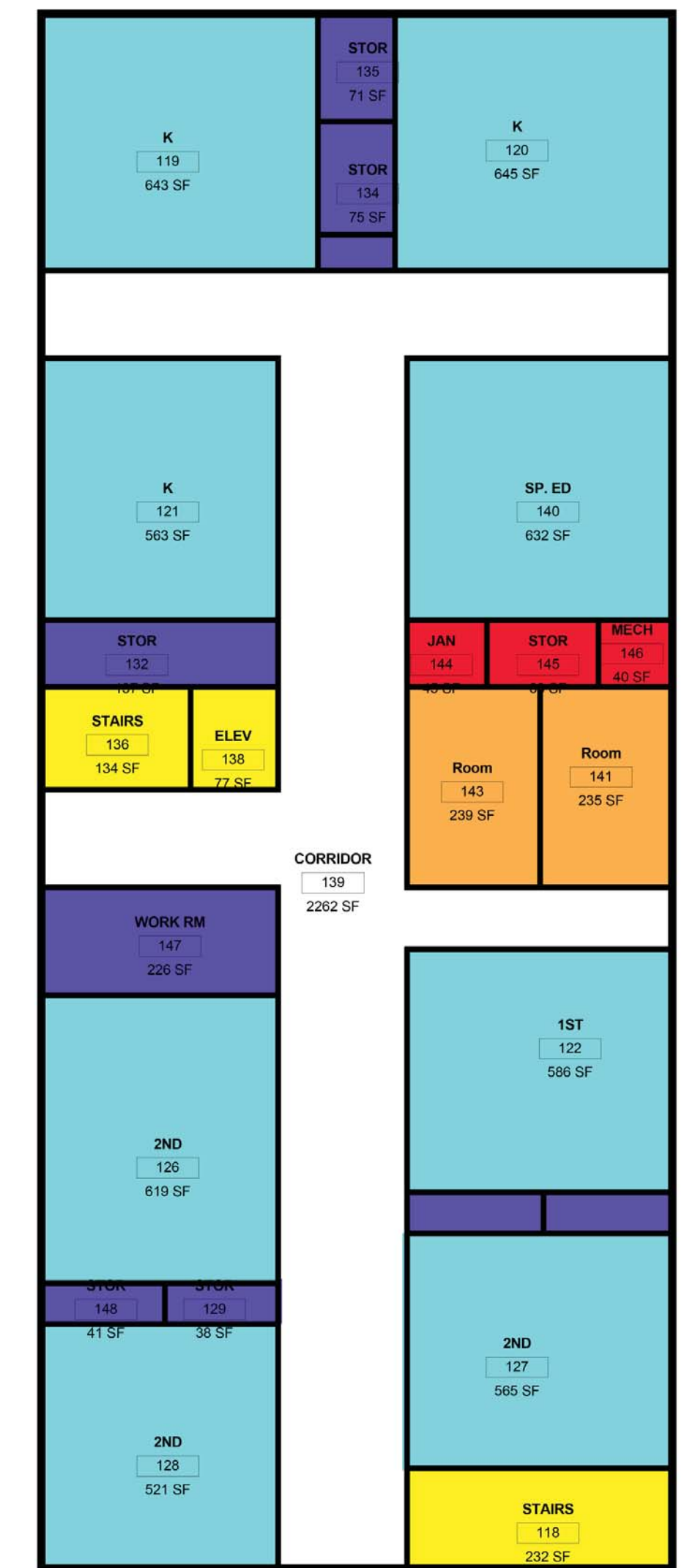
EXISTING CONDITIONS



EXISTING SITE PLAN  
SCALE: NTS



INSPIRATION DESIGNS IMAGES



ELEMENTARY SPACE PLANNING  
SCALE: NTS



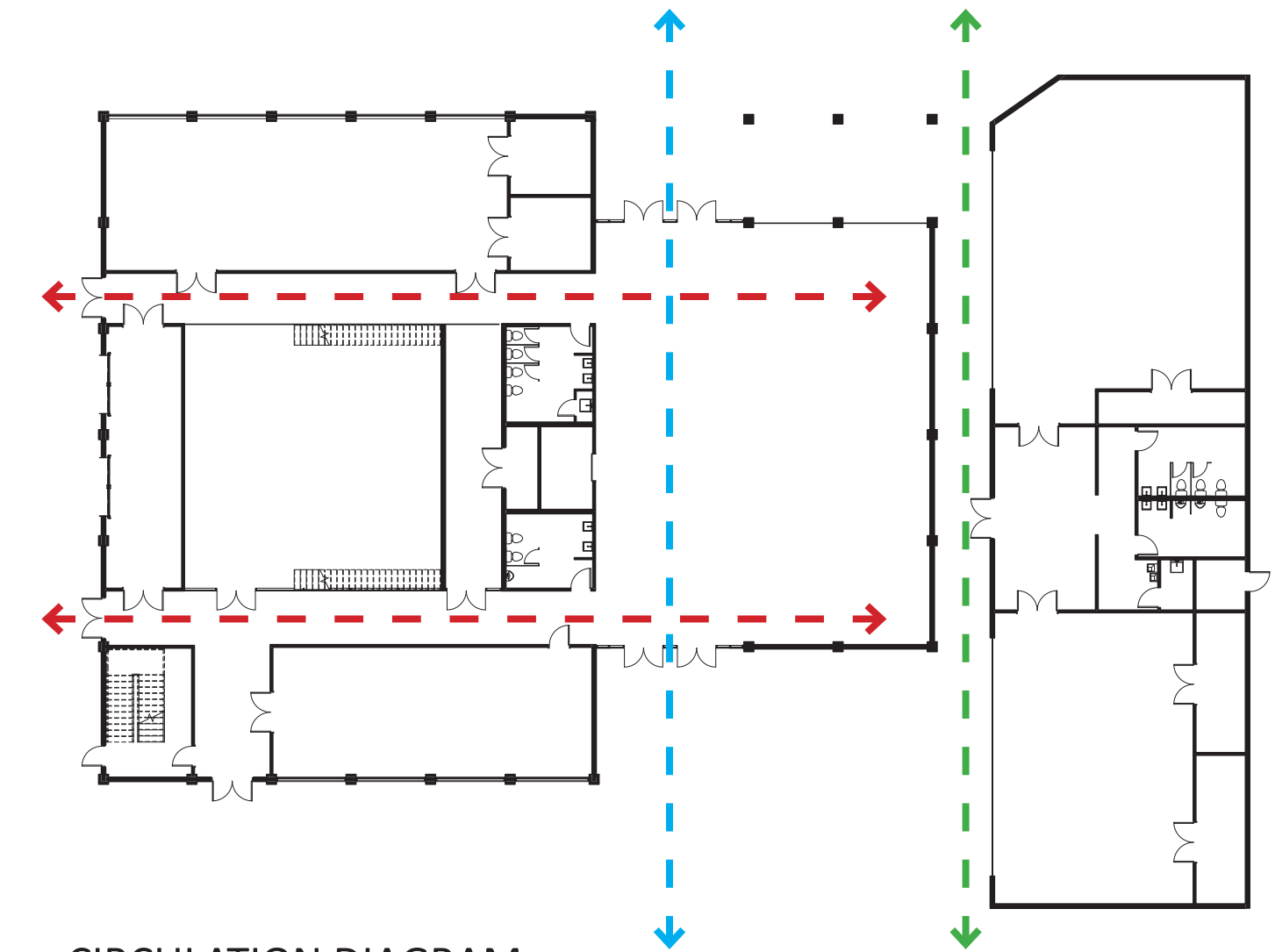
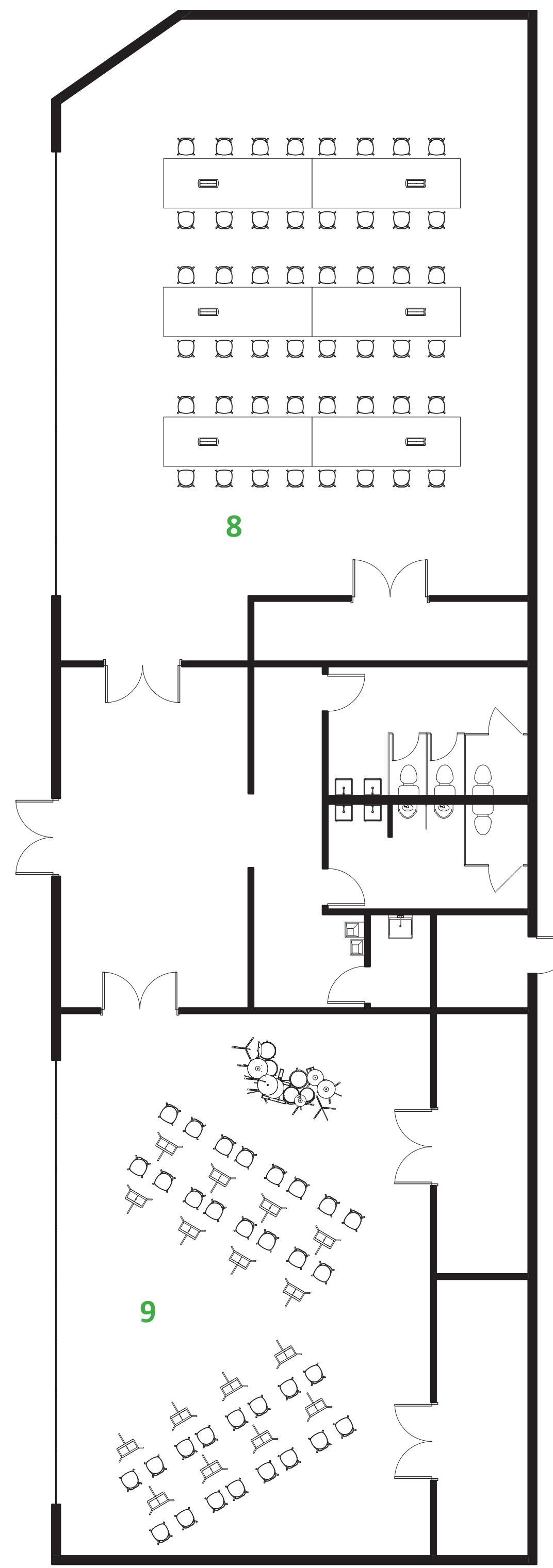
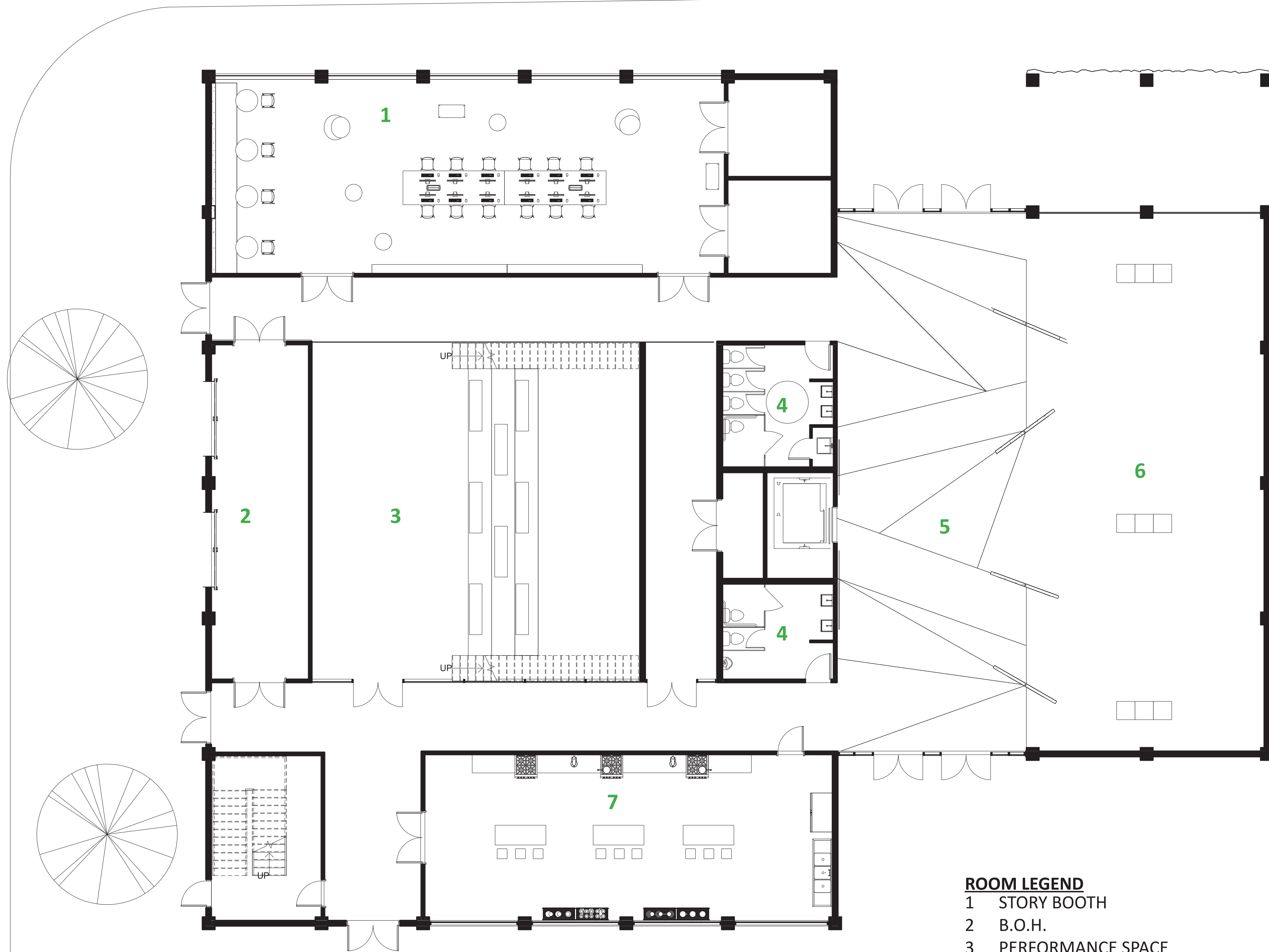
DAYCARE SPACE PLANNING  
SCALE: NTS

- CLASSROOMS
- RESTROOMS
- CIRCULATION
- STORAGE
- UTILITY
- ADMINISTRATION

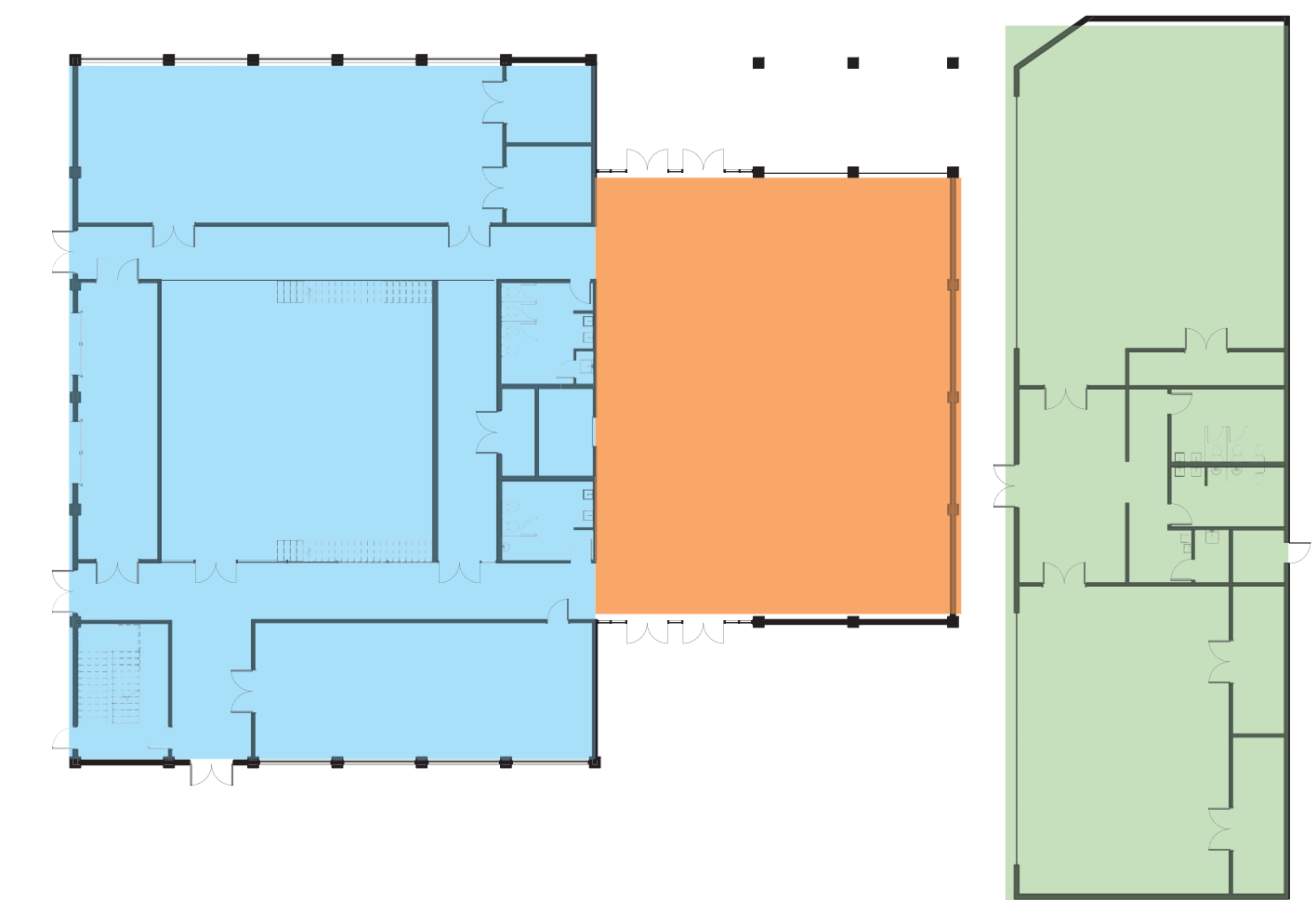


# YOUTH ART CENTER

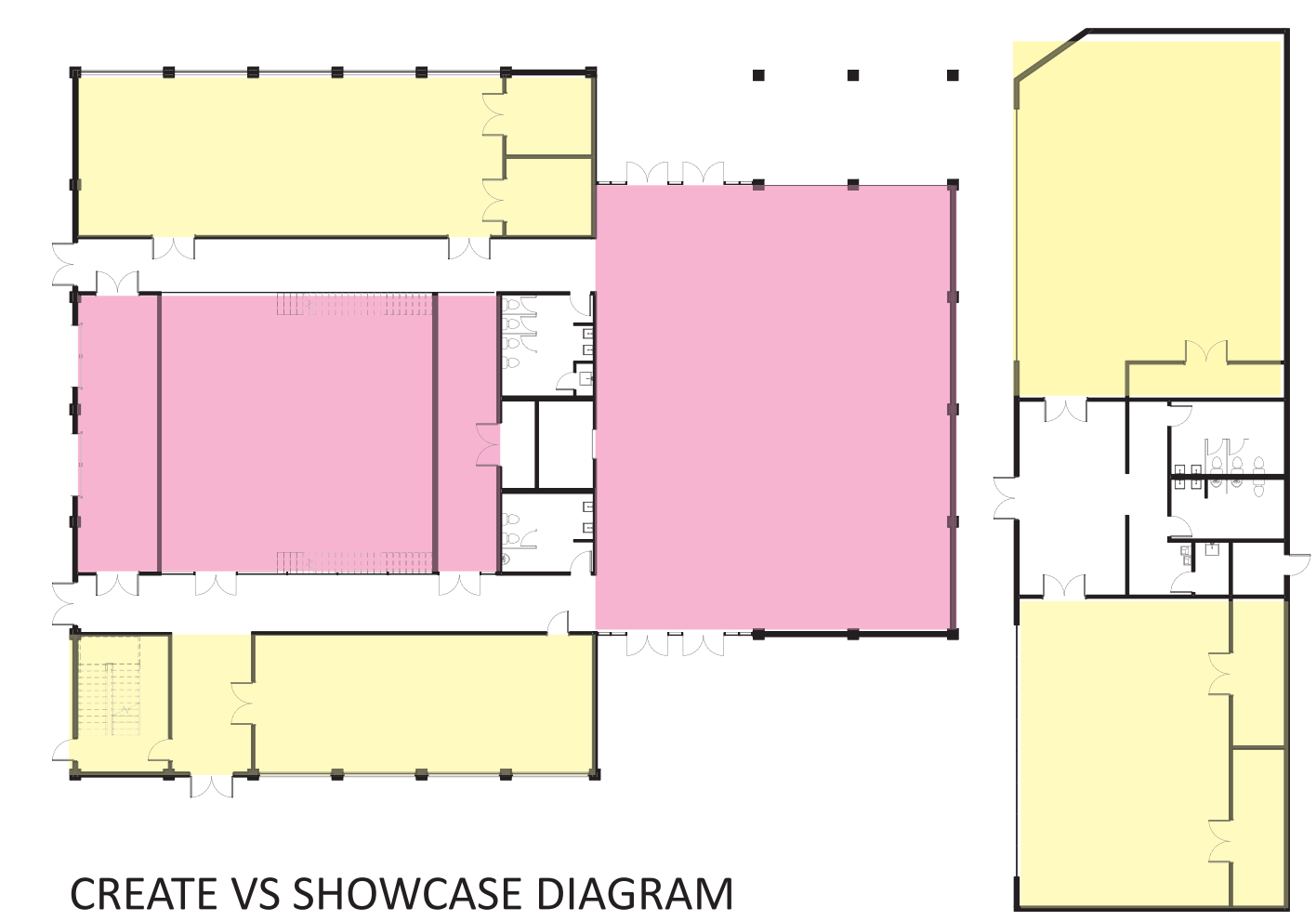
At the Youth Art Center, students from all grade levels can come here to participate in art programs that are not provided in the Shelby County School's curriculum. This space also acts as an after-school care program when students' parents are still at work. The Youth Art Center not only wants to cater to students, but to engage the remaining residents in the community, there are programs that adults can participate in as well.



**CIRCULATION DIAGRAM**  
 ← - - - → OUTDOOR CIRCULATION  
 ← - - - → MAIN ENTRY CIRCULATION  
 ← - - - → SECONDARY CIRCULATION



**MASSING DIAGRAM**



**CREATE VS SHOWCASE DIAGRAM**  
 EXHIBIT SPACE  
 CREATIVE SPACE

FIRST FLOOR PLAN  
 SCALE: 1/8" = 1'-0"



**ROOM LEGEND**

- 1 STORY BOOTH
- 2 B.O.H.
- 3 PERFORMANCE SPACE
- 4 RESTROOMS
- 5 PRE-FUNCTION SPACE
- 6 EXHIBIT SPACE
- 7 LEARNING KITCHEN
- 8 MULTI-PURPOSE SPACE
- 9 MUSIC ROOM

OCCUPANCY TYPE: MIXED USE  
 A3: AUDITORIUM AND GALLERY  
 E: EDUCATIONAL

**TOILET COUNT:**

A3: 1810 SF / 7 = 259  
 5770 SF / 5 = 1154  
 1179 SF / 15 = 79  
 A3 TOTAL: 1492 SF / 2 = 746 (6 MEN AND 11 WOMEN)

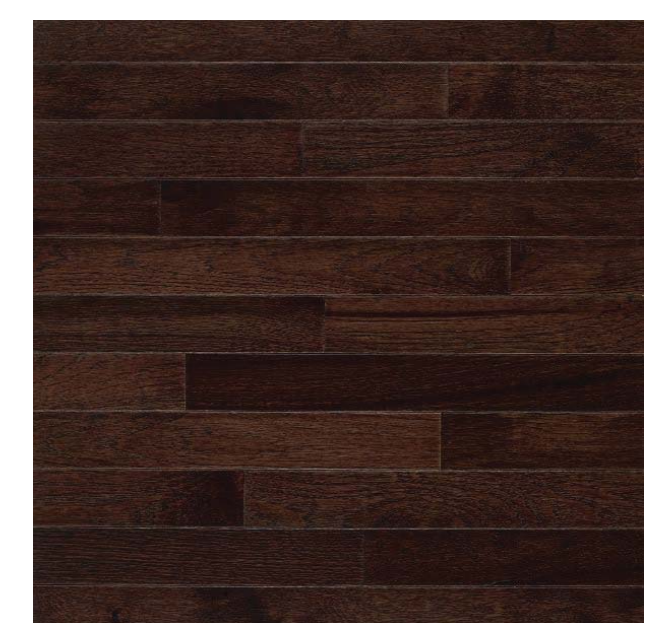
E: 940SF / 50 = 19  
 1498 SF / 50 = 30  
 1148 SF / 50 = 23  
 1315 SF / 50 = 26  
 E TOTAL: 98 SF / 2= 49 (1 MEN AND 1 WOMEN)



3-FORM: BRUSH STROKE  
 ELEVATOR WALL FEATURE

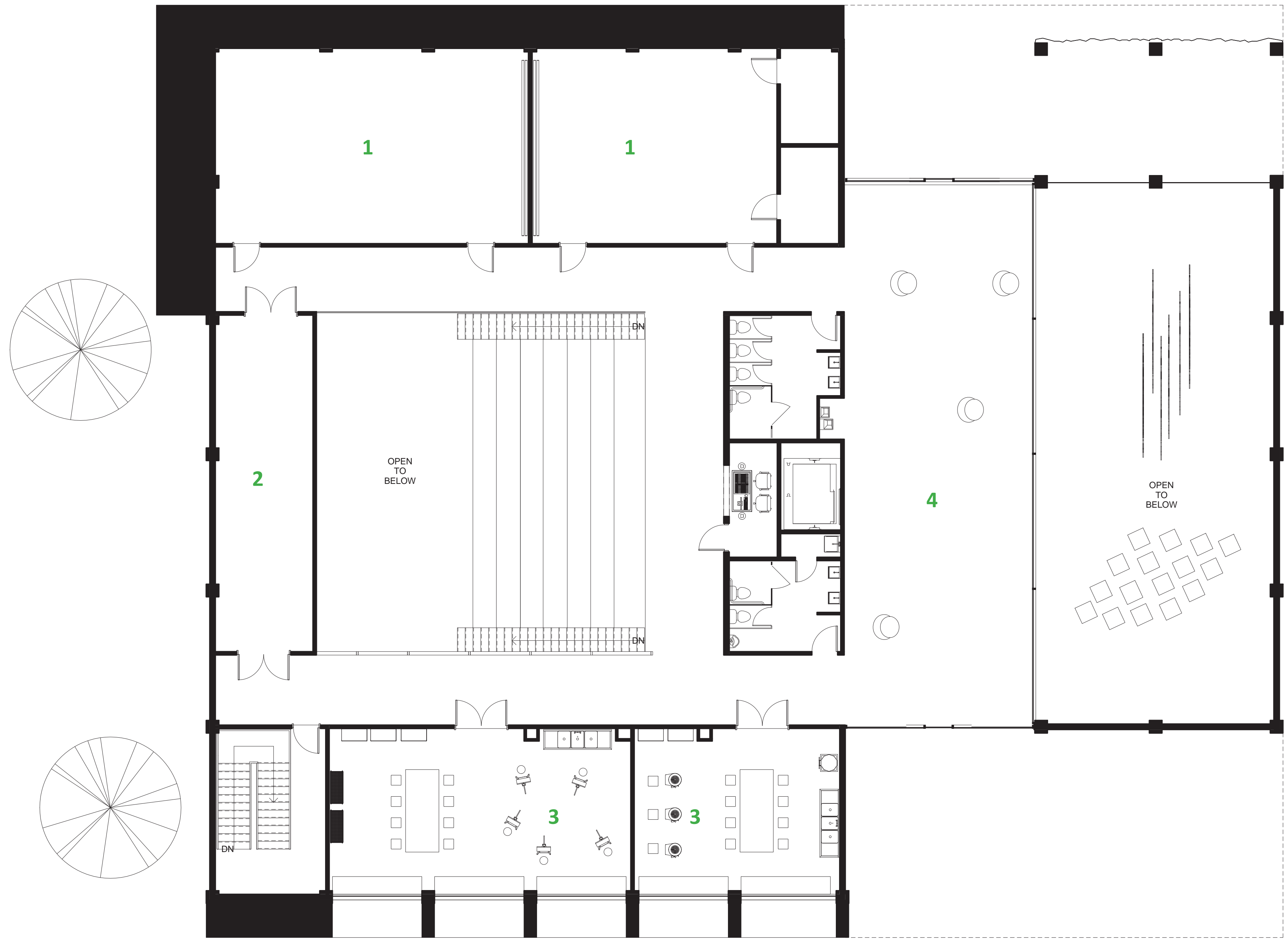


WHITE STACKED STONE  
 ELEVATOR WALL FEATURE



WOOD FLOORING  
 MAIN GALLERY SPACE

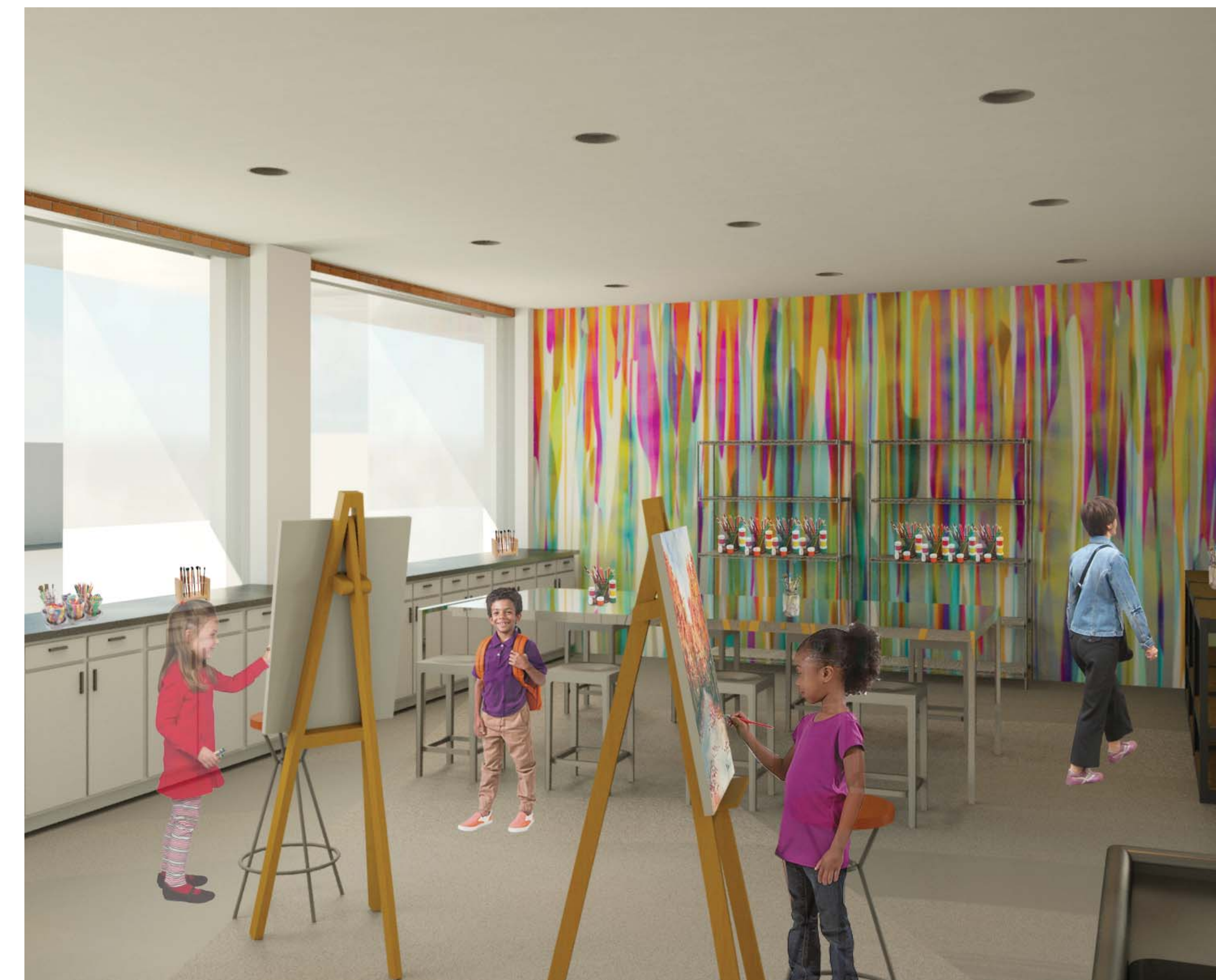




SECOND FLOOR PLAN  
SCALE: 1/8" = 1'-0"



- ROOM LEGEND**
- 1 DANCE STUDIOS
  - 2 IDEA BOX
  - 3 ART STUDIOS
  - 4 LOUNGE SPACE



ART STUDIO- DAY CLASS



ART STUDIO- NIGHT CLASS



STORY BOOTH IDEA

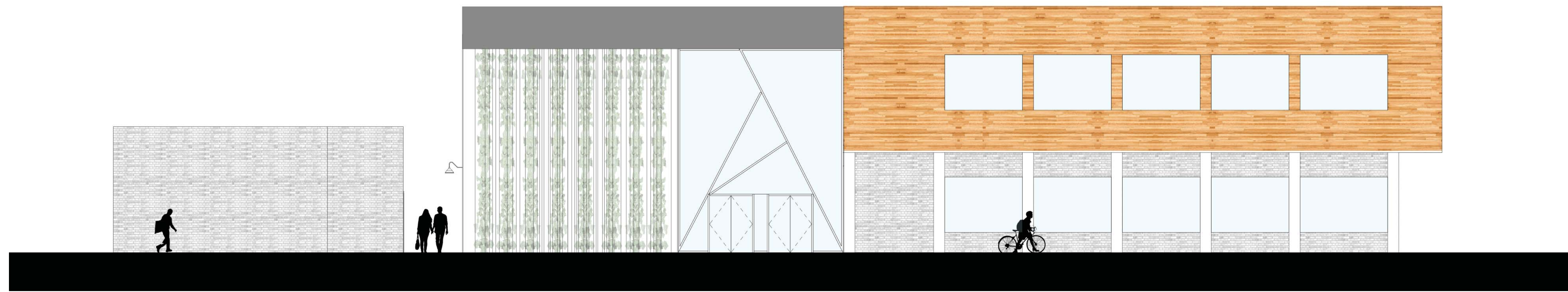


LOUNGE SPACE IDEA



IDEA BOX INSPIRATION

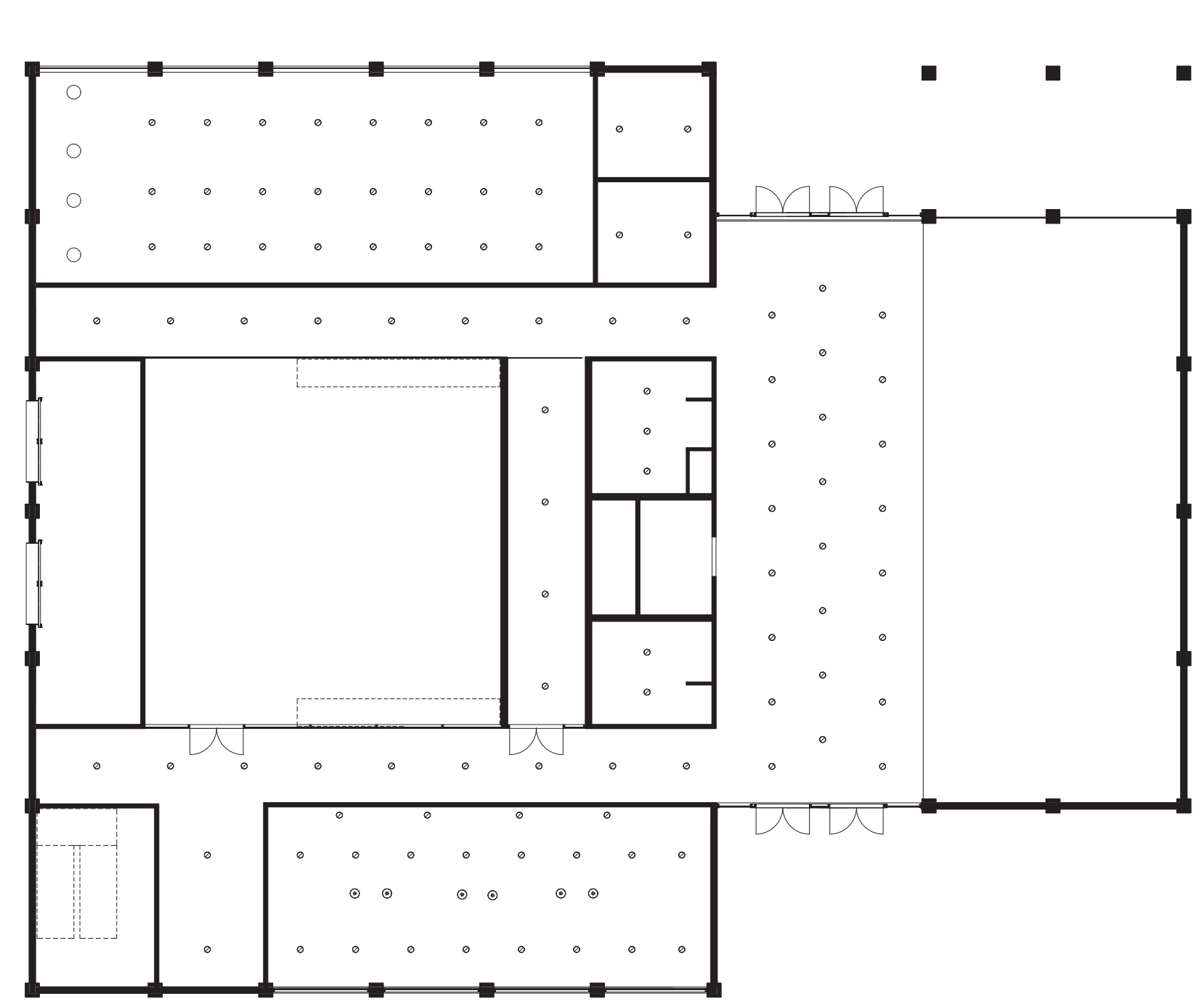




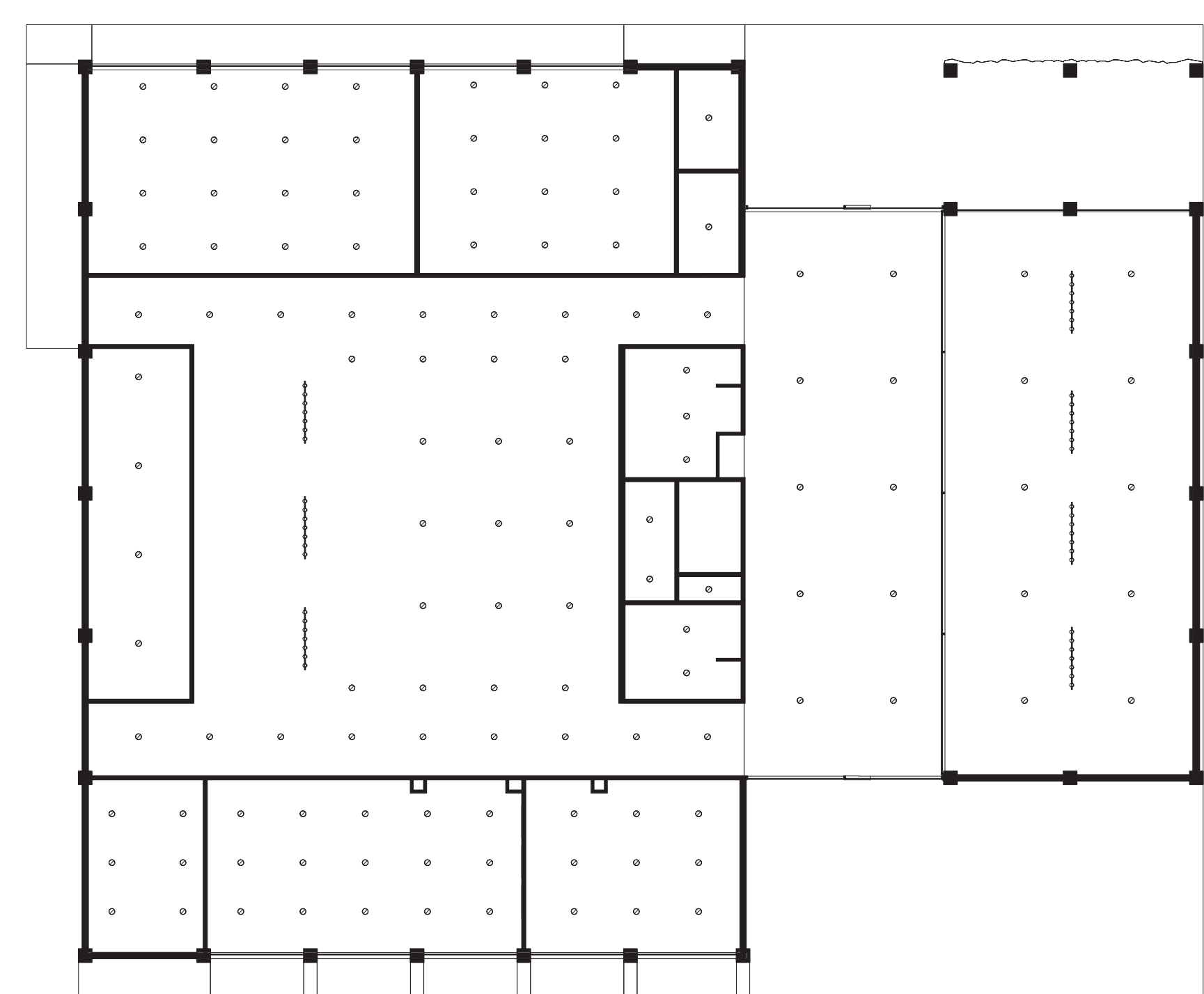
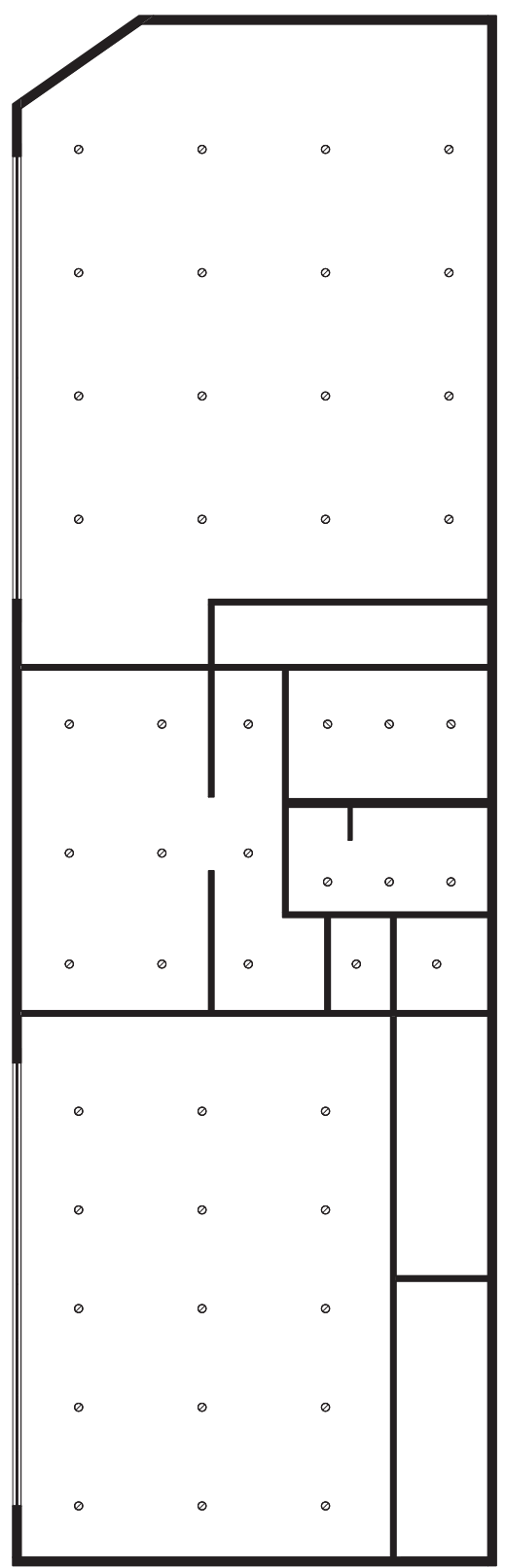
NORTH ELEVATION  
SCALE: 1/8" = 1'-0"



SOUTH ELEVATION  
SCALE: 1/8" = 1'-0"



FIRST FLOOR REFLECTED CEILING PLAN  
SCALE: NTS



SECOND FLOOR REFLECTED CEILING PLAN  
SCALE: NTS



CARAVAGGIO (HIGHTOWER)  
KITCHEN & STORY BOOTH



CAN LIGHTS  
AMBIENT LIGHT



CARAVAGGIO (HIGHTOWER)  
KITCHEN & STORY BOOTH



ARROYO MOBILE (HIGHTOWER)  
STORY BOOTH



FOUR CAST FOUR (HIGHTOWER)  
STORY BOOTH



TOMBOLE BENCH (HIGHTOWER)  
MAIN GALLERY SPACE



SPUN CHAIR (HERMAN MILLER)  
LOUNGE SPACE





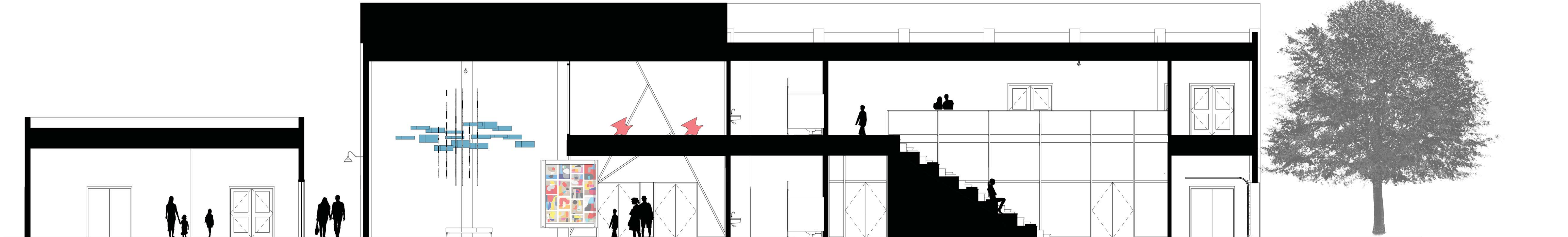
MAIN GALLERY SPACE



LEARNING KITCHEN

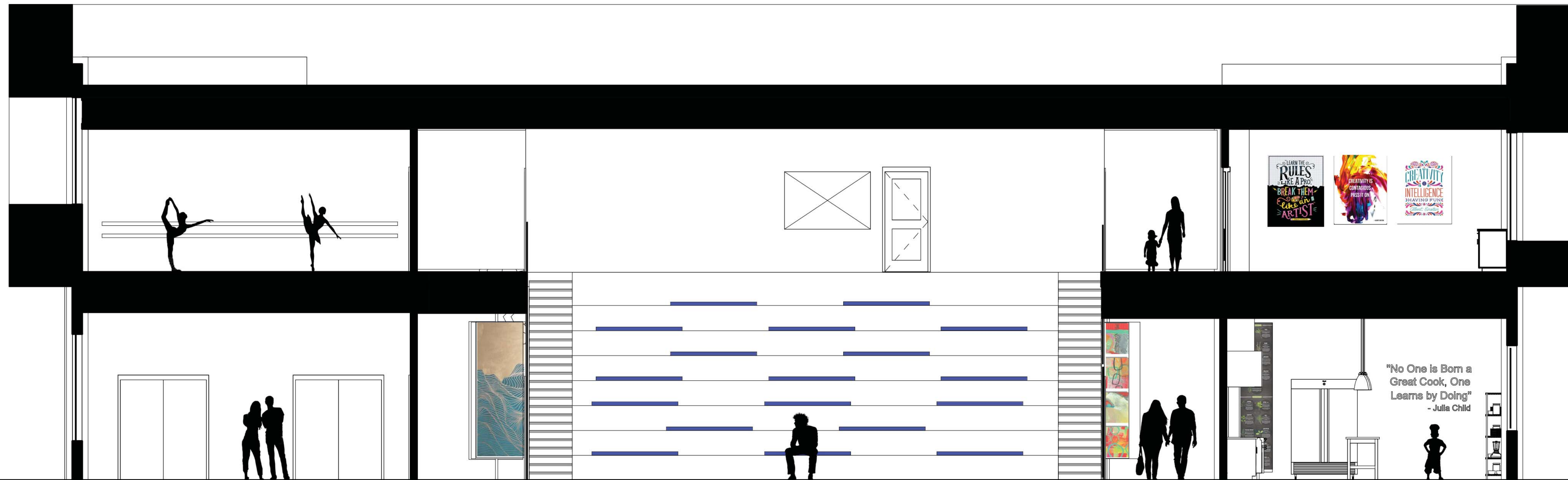


STORY BOOTH



LONGITUDINAL SECTION  
SCALE: NTS





TRANSVERSE SECTION  
SCALE: NTS



PERFORMANCE SPACE



DANCE STUDIO



PERFORMANCE SPACE INSPIRATION



PERFORMANCE SPACE INSPIRATION